

1

2

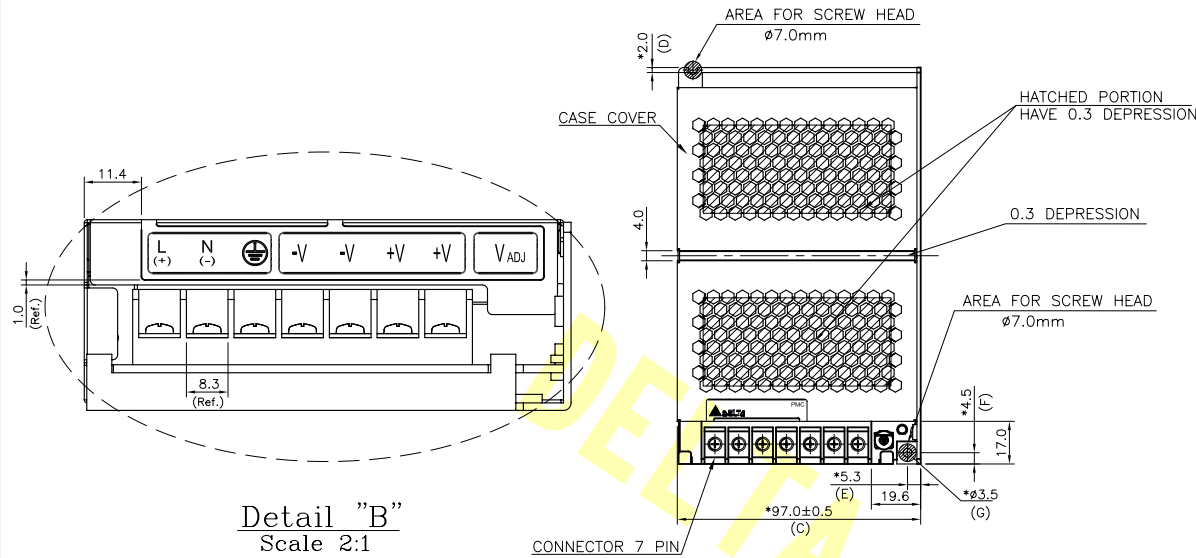
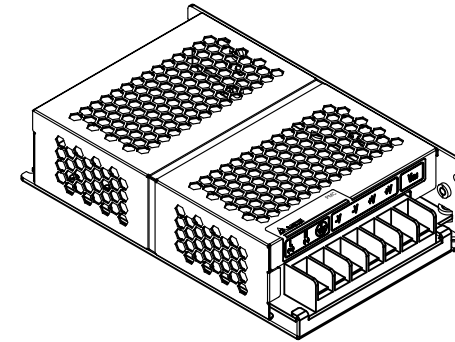
3

4

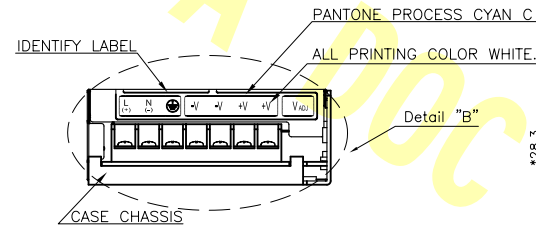
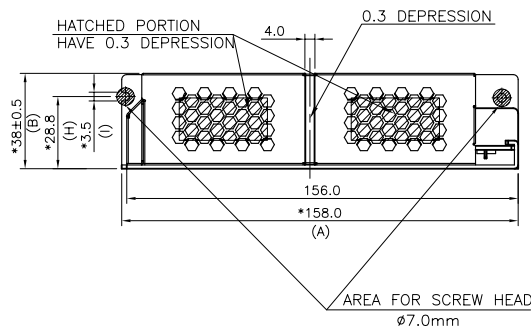
## REVISIONS

Drawn	Design	
Checked	Approved	
ISSUE DATE		REV.
- FIRST ISSUE		
<i>Jephi</i>	May 26'2009	<i>Jephi</i> May 26'2009
<i>Chuanwit</i>	May 26'2009	<i>Justin</i> May 26'2009
May 26'2009		00

A

Detail "B"  
Scale 2:1

B

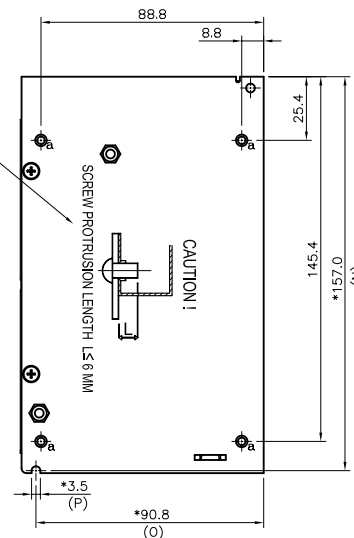


## NOTES:

- MARK ( \* ) DIMENSIONS ARE CONTROL DIMENSION.
- PRODUCT SURFACE SHOULD BE CLEAN, NO DENT AND FREE FROM TOOLING MARK.
- SPEC LABEL DETAIL AND PRINTING CONTENTS REFER TO SN.
- EXTRUDE HOLE WITH THREAD MUST MEET TORQUE 8.0 KG-CM(MIN).
- ENGRAVING ON CHASSIS MUST BE VISIBLE.
- MUST MEET DELTA GENERAL STANDARD: 10000-0162.

ITEM	DESCRIPTION	DELTA P/N	Q'TY
1	CASE CHASSIS	33030055XX	1
2	CASE COVER	33030056XX	1
3	CONNECTOR 7 PIN	30704951XX 100% 30704971XX 0%	1
4	SPEC LABEL	32680958XX	1
5	IDENTIFY LABEL	32620386XX	1

ENGRAVED



<b>DELTA ELECTRONICS (THAILAND)</b> <b>PUBLIC COMPANY LIMITED</b>	Drawn: <i>Jephi</i> May 26'2009	Safety: _____
	Design: <i>Jephi</i> May 26'2009	Layout: _____
THESE DRAWINGS AND SPECIFICATIONS ARE THE PROPERTY OF DELTA ELECTRONICS (THAILAND) PUBLIC CO., LTD. AND SHALL NOT BE REPRODUCED OR USED AS THE BASIS FOR THE MANUFACTURE OR SELL OF APPARATUSES OR DEVICES WITHOUT PERMISSION.	Checked: <i>Chuanwit</i> May 26'2009	IE.: _____
	Approved: <i>Justin</i> May 26'2009	E.E. Chk.: <i>Kasada T</i> May 26'2009
	Material: _____	E.E. Apvd: <i>S. Sittaporn</i> May 26'2009
DIMENSIONAL TOLERANCES ( ) ( / ) ( ) ( ) ( ) <30 :±0.25    DECIMALS    UP-100 :±0.2    250-300 :±0.4    UP-600 :±1.5 >30-100 :±0.35    X :±0.3    100-150 :±0.25    300-350 :±0.45    600-900 :±2.4 >100-300 :±0.5    XX :±0.2    150-200 :±0.3    350-400 :±0.5    900-OVER :±3.1 ABOVE 300 :±0.6    XXX :±0.10    200-250 :±0.35	Description: <b>PHYSICAL DIMENSION DRAWING</b>	
SCALE  UNIT mm. USED ON EOE11010187	Part No. PD-EOE11010187	REV. 00
THIRD ANGLE PROJECTION <b>A3</b> SIZE	SHEET 1 OF 1	ISSUE DATE: May 26'2009

1

2

3

4